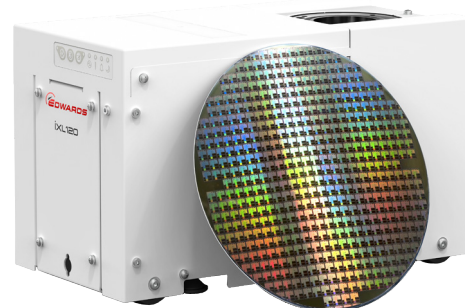


# iXL120 Dry Pump

**iXL120 is a compact, low energy, 110 m<sup>3</sup>/h dry pump for wafer handling and other clean duty applications. It provides fast pump down of load lock chambers with extremely low energy consumption.**

iXL120 is one of the smallest and lightest pumps available for load lock and clean applications. It's low vibration and low noise levels make it ideal for mounting on-tool or within a fab's waffle floor, helping to save valuable fab floor space. A Green Mode allows reduced utilities usage during idle periods, lowering utility costs and helping to save the environment!



## Features and Benefits

- Class leading chamber pump down time reduces total average cycle time (TACT)
- Only 0.55kW<sup>1</sup> power consumption helps minimise customer cost of ownership
- Green Mode can reduce power consumption by up to 92% during idle periods
- Up to 35°C water supply helps reduce facility cooling water requirements
- Extremely small and light, helping to save valuable fab space
- Oil lubricated precision bearings ensure smooth, low vibration operation with no routine maintenance
- Unique dual inlet arrangement allows efficient foreline routing and location options
- Zero nitrogen purge option eliminates the need for a nitrogen supply, saving installation and operating costs
- A single variant covers the supply voltage range 200-460 V, 50/60 Hz

<sup>1</sup> Average power at ultimate pressure and 700T exhaust pressure

## Technical data

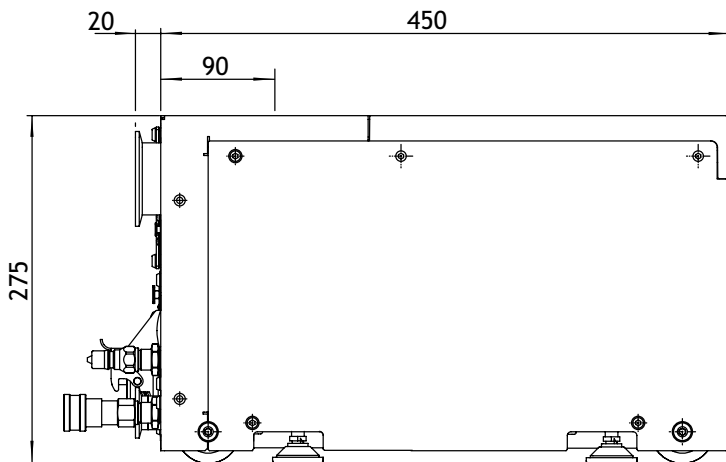
		iXL120	iXL120N
Peak speed	m <sup>3</sup> /h/ cfm / l/min	110/65/1833	110/65/1833
Ultimate pressure (typical)	mbar / Torr / Pa	0.013/0.009/1.3	0.013/0.009/1.3
Power at ultimate <sup>1</sup>	kW	0.55	0.55
Power in Green Mode	kW	0.045	0.045
Inlet connection	Vertical/Horizontal	ISO63/NW50	ISO63/NW50
Outlet connection		NW25	NW25
Cooling water connection		Optional	Optional
Nitrogen connection		n/a	¼" tube fitting
Water flow <sup>2</sup>	l/m	1	1
Typical purge flow	slm	0	5
Weight	kg	59	59

<sup>1</sup> Average power at 700T exhaust pressure  
<sup>2</sup> Flow with optional Constant Flow Valve fitted

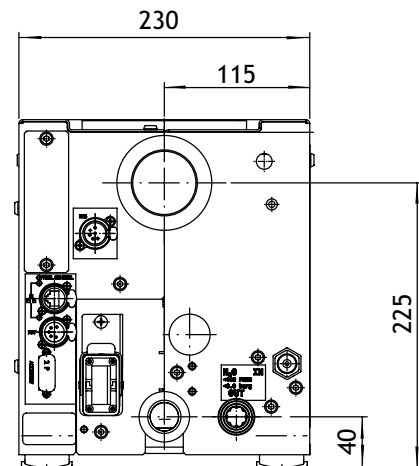
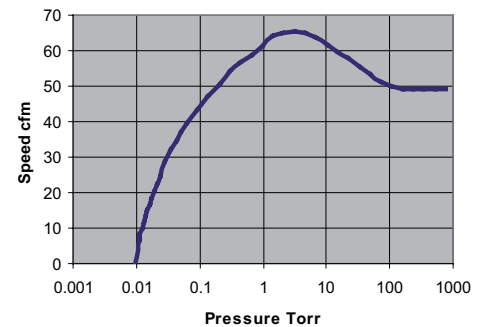
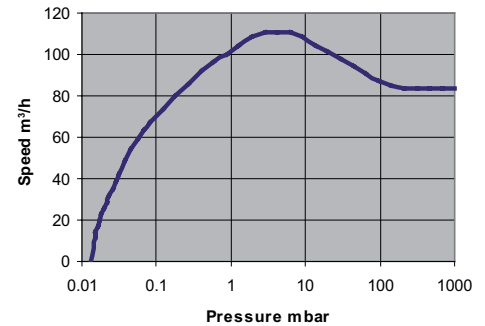
## Ordering Information

iXL120 and iXL120N pumps can be supplied with a range of Tool Interfaces (MicroTIM), water fittings and other options. Contact Edwards for advice on options and part number.

## Dimensions



## Performance



## Global contacts

### EUROPE

UK Crawley +44 1293 528844  
 UK (local rate) 08459 212223  
 Belgium Brussels +32 2 300 0730  
 France Paris +33 1 4121 1256  
 Germany Munich 0800 000 1456  
 Italy Milan +39 02 48 4471

### USA

Niagara (toll free) +1 800 848 9800  
 BRAZIL  
 Sao Paulo +55 11 3952 5000  
 ISRAEL  
 Qiryat-Gat +972 8 681 0633

### ASIA PACIFIC

China (toll free) +86 400 111 9618  
 India, Pune +91 20 4075 2222  
 Japan, Yachiyo +81 47 458 8831  
 Korea, Bundang +82 31 716 7070  
 Singapore +65 6546 8408  
 Taiwan R.O.C. Jhunan Town +886 3758 1000